

Presto Printing Mailbox

Quick Start Guide

© 2008 Presto Services Inc. "Presto", "You're Connected", and the Presto stylized logos, are service marks or registered service marks of Presto Services Inc. U.S. and international patents pending. "HP" is a registered trademark of Hewlett-Packard Development Company, L.P.

Visit us at www.presto.com



You're just four steps away from being able to receive email, photos & documents!

Need Help?

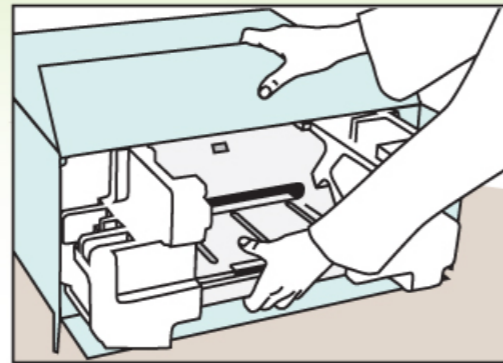
Just call 800-919-3199

1 Unpack

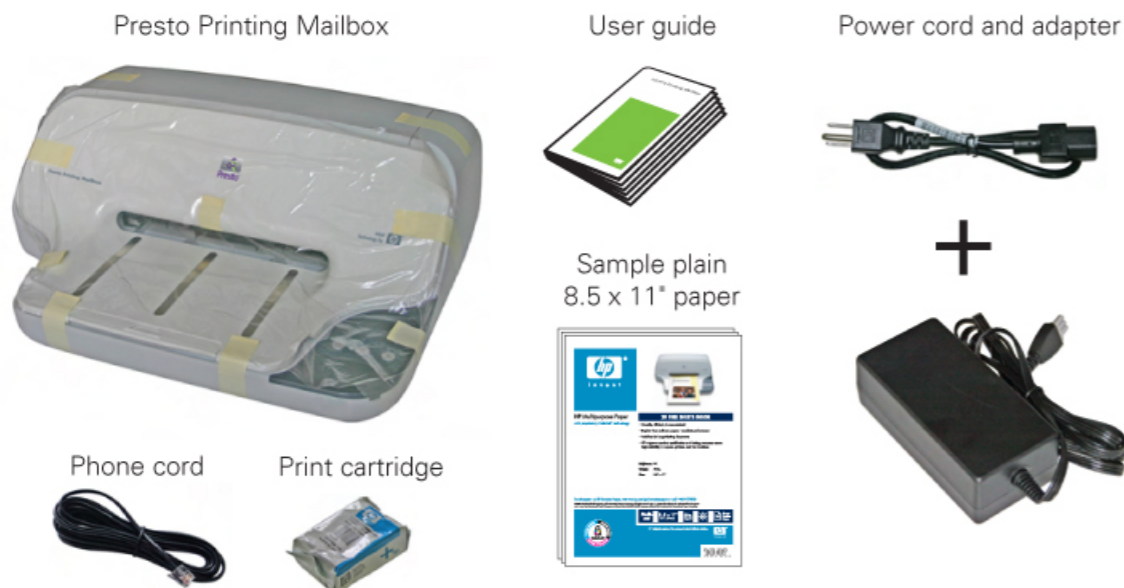
- A. Unpack all the items from the box.

Hint: Unpack the box contents by...

- Place box flat on a table...
- Grasp mailbox as shown...
- Pull entire assembly out of the box, onto the table.



Be sure you have all of the items below:



- B. Remove the bag, tape and plastic film from the printer.
- C. Remove the two orange inserts where shown below.



2 Activate

- To receive email, photos and PDF documents, you need to activate your Presto service.

Hint: If you received the Printing Mailbox as a gift, your friend or family member may already have done this for you.

It's easy to set up the Presto Service through either of the following two methods:

- » If you, or a friend, have access to the internet, visit www.presto.com and click on the "**Presto Account Sign up**" link at the top of the page. Follow the simple online instructions.
- » Or, call us toll-free at 800-919-3199

turn over

3 Connect

- A. First, plug the provided phone cord into the back of the Presto Printing Mailbox in the jack labeled "1-LINE". Plug the other end into an available telephone jack.



- B. (Optional) If you want to locate a telephone in the same location as the Printing Mailbox, you can plug it into the other jack on the rear of the Mailbox labeled "2-EXT".



Hint: The Presto Printing Mailbox and your phone share the same line. No need for a second line!

- C. Next, connect the power cord and adapter.
- D. ...then plug the adapter cord into the power jack on the rear of the Printing Mailbox...



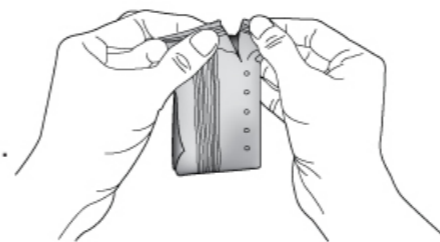
- E. ...and plug the power cord into an electrical outlet.

The Printing Mailbox will now perform a system check. When the blue light stops blinking, the check is complete.

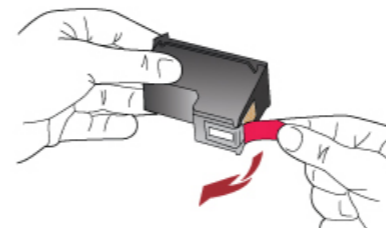
4 Load

Note: Do not touch the copper-colored area on the cartridge.

- A. Remove the print cartridge from the pouch.

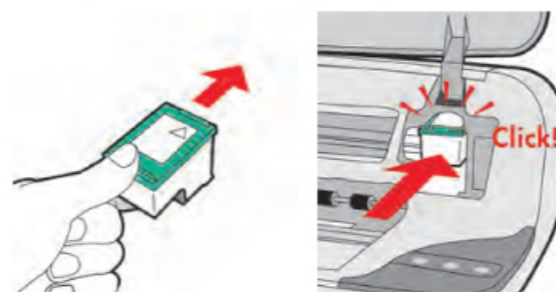


- B. Pull the pink tab to remove the tape from the cartridge.



The Printing Mailbox must be plugged in before inserting the print cartridge.

- C. Open the Printing Mailbox cover fully, pushing back gently until it stays open.
- D. Insert the print cartridge in the opening on the right hand side by pushing it forward. You should hear a "click" when the cartridge is correctly in place.



- E. With the cover still open, gently slide paper forward into the paper tray until it stops.



- F. Close the cover. When the blue light glows continuously, your Presto Printing Mailbox is ready! In a few minutes, your Printing Mailbox will make its first call to the Presto Service and print an important message. If the message says "Welcome to Presto", setup is complete. If it says "Action Required", please follow the steps to complete the setup process.

Your Presto Printing Mailbox connects to the Presto Service at scheduled times throughout the day. Please keep your Printing Mailbox plugged into the telephone line and electrical power to automatically retrieve and print email, photos and PDF documents.

Congratulations! You are now ready to receive email and photos!

Need Help?

Just call 800-919-3199



Q6030-90001